



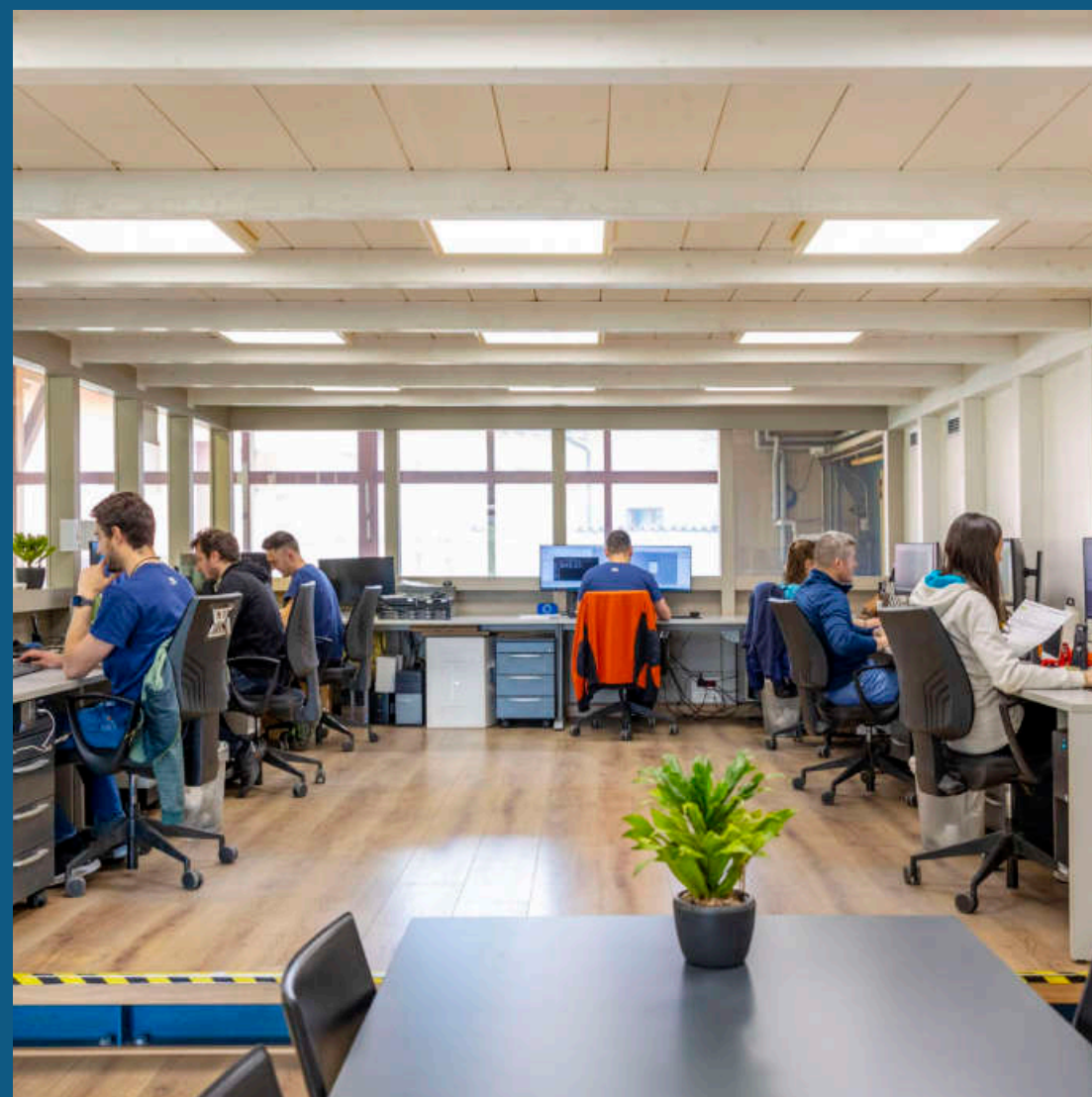
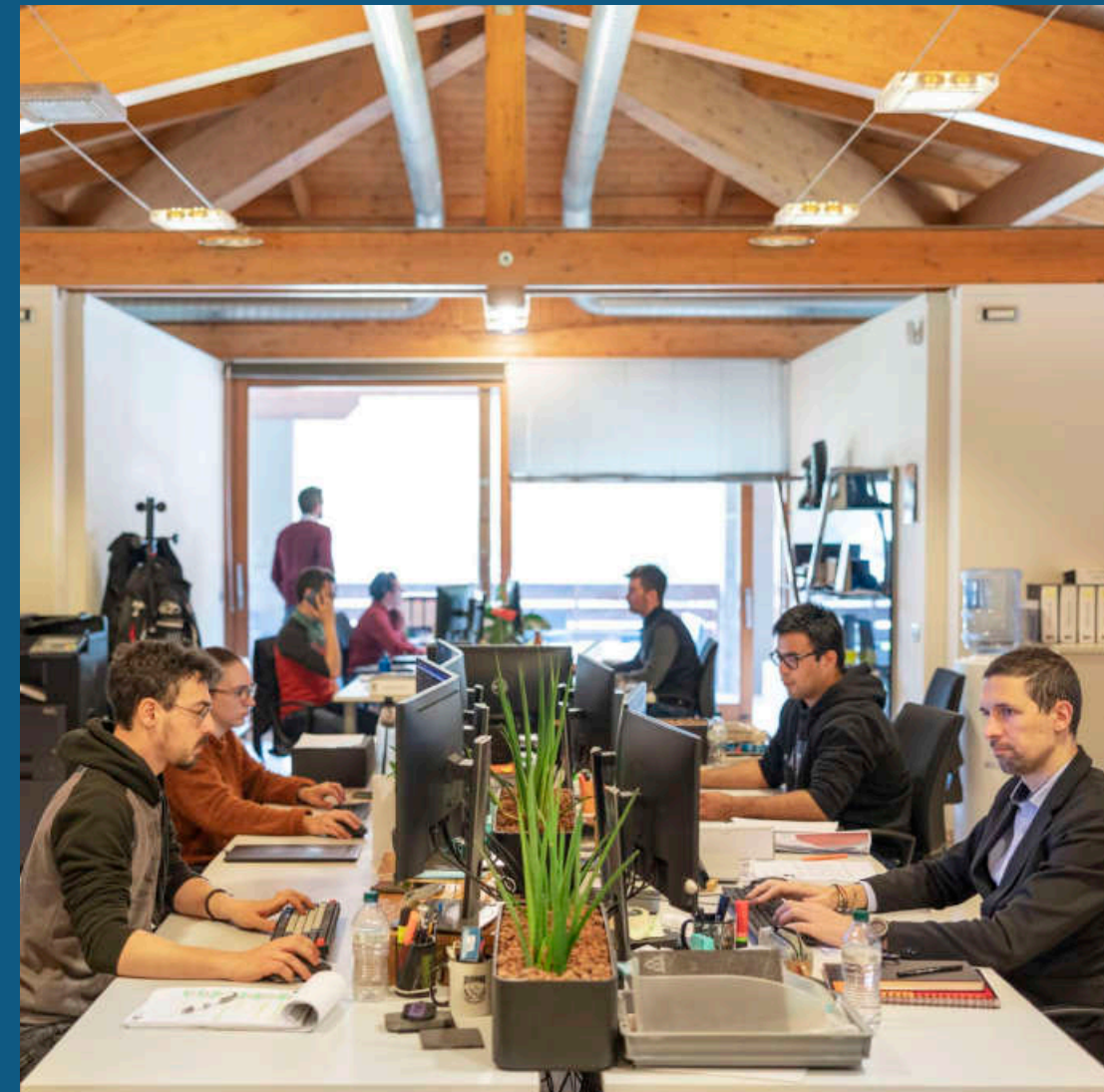
SURFACES MATTER
Choose laser engraving







For almost 25 years
we have been enhancing
the surfaces of plastic and
rubber products with laser
texturing on moulds.

We can support you offering
solutions at the forefront in terms
of quality and technology.



ML ENGRAVING

- Establishment 1999
- Team of 70 professionals
- 20 laser machines
- Headquarters 2.500 sm
- Members of the GLG Global Laser Group
- 3 patents
- 7 projects granted by European Commission
- 1 Logistics dept. for shipments all over Europe



LASER LIGHT AT YOUR SERVICE

The laser beam ensures accuracy of detail and extreme precision.

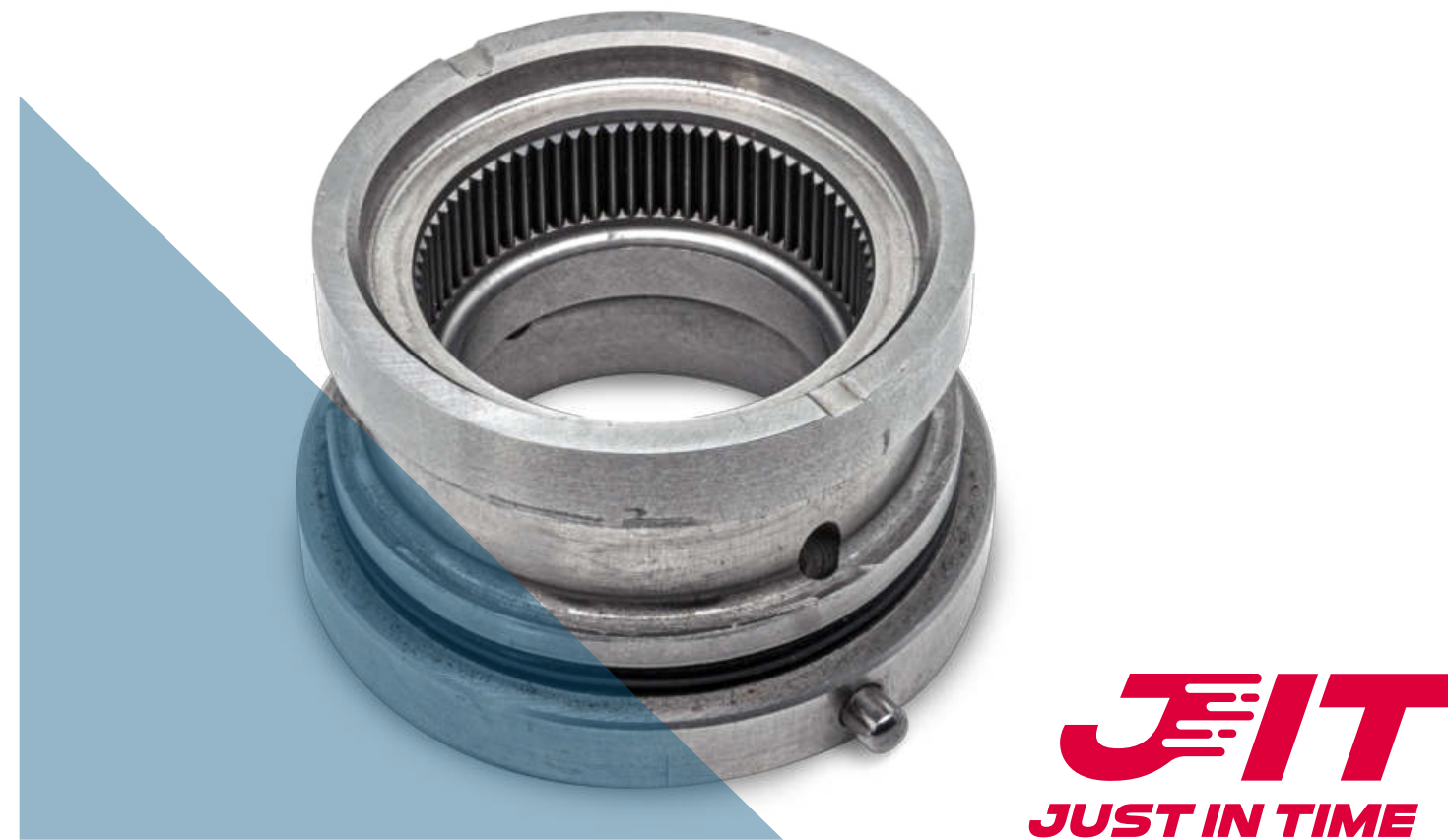
Our 20 laser machines make us the ideal partner for the management of any project, including large-volume product runs.

Laser technology is sustainable, energy-efficient versatile.

ML ENGRAVING BUSINESS UNITS



Laser Surface Texturing transforms the surfaces of plastic and rubber products to increase their value and give them a recognisable identity. Digital co-design work and 3D laser engraving enable never seen before customized surface finishes.



JIT ensures fast, precise and efficient laser engraving and machining for moulds and precision mechanics. JIT services and processes are used to improve the technical functionality of surfaces and helps to avoid problems during moulding processes.



Nuovo Cesello evokes the timeless elegance and refinement of the art of hand-engraving, reinterpreting it in a modern key. ML Engraving's technology makes it possible to create artworks made with metal.



LASER SURFACE TEXTURING

We enrich the plastic and rubber components of your products with exclusive textures.

Our finishes will boost the surface of your product:

- to make it more appealing and unforgettable.
- to improve its performance by adding specific features such as scratch resistant, non-slip, anti-reflection, etc.



Bottega Veneta
WELLINGTON BOOTS
Bottega Veneta weaving

Wever & Ducrè
REVER
Linen texture

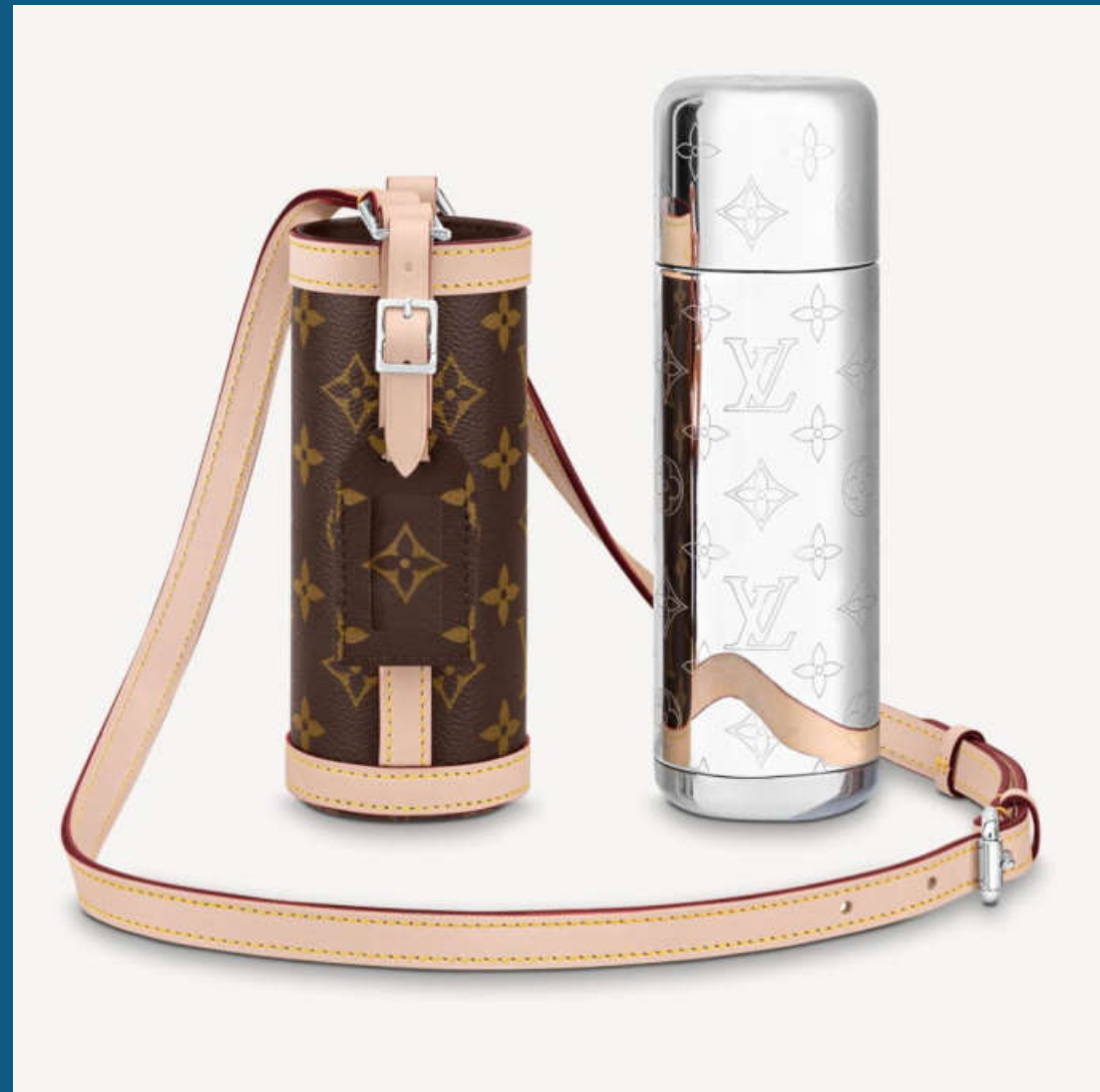


RV Roncato
BOX
*Geometric texture
anti-scratch*



With a problem-solving attitude, JIT ensures fast, precise and efficient laser engravings:

- surface enhancing
- moulding optimization
- friction management
- EDM laser
- QR Code and Datamatrix engraving



Nuovo Cesello is dedicated to the artistic decoration on metal for limited edition and luxury products.

We can even take care of finishing processes like lapping and gilding, then deliver the finished product directly to you.



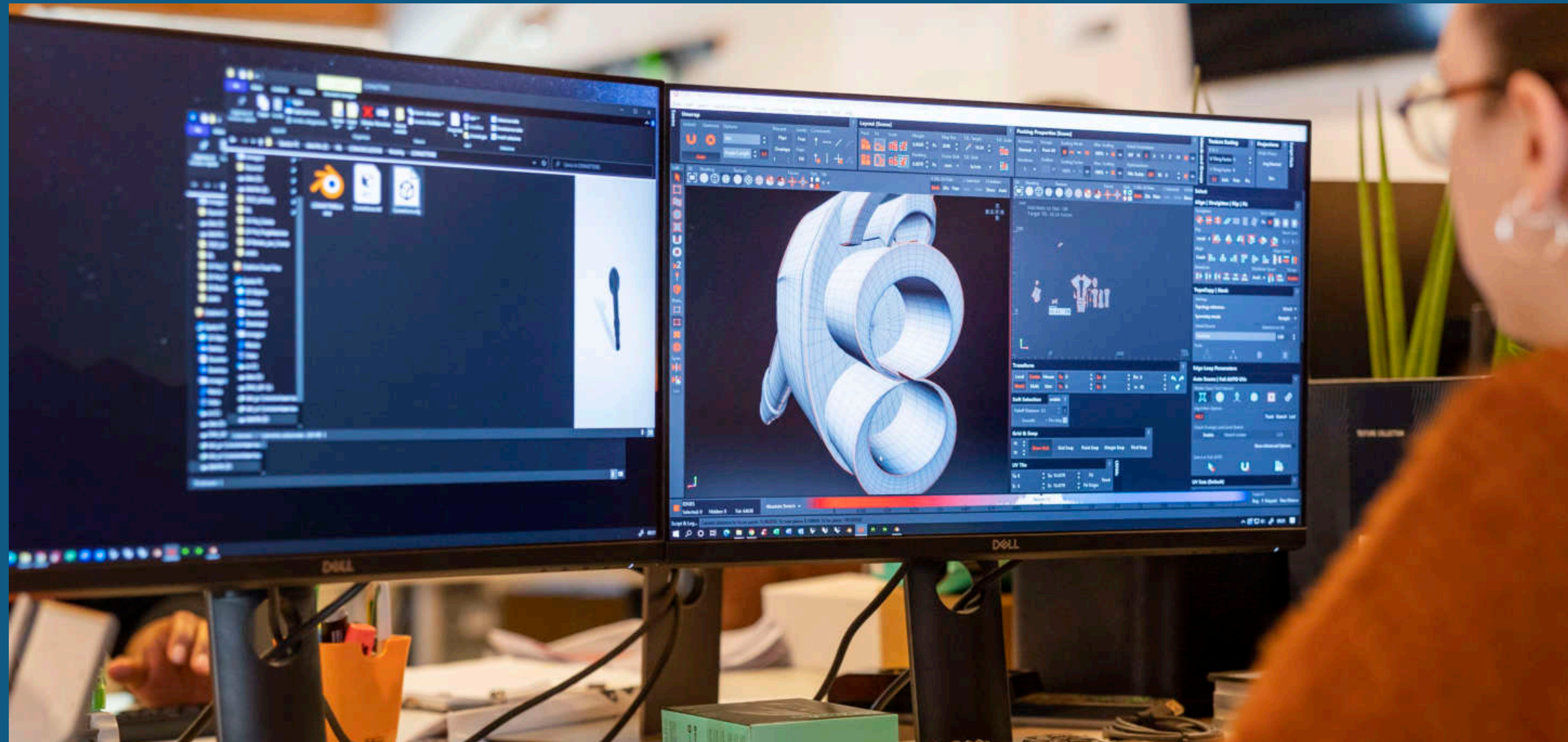
DIGITAL CO-DESIGN DRE®

DRE® is the key to turn your ideas into real textures.

With DRE® we can:

- design your texture based on your concept
- anticipate and resolve critical production issues
- create a product preview called a DRE Render.

DRE® guarantees the perfect match between preview (DRE Render) and final result.





Co-design has never been so easy.

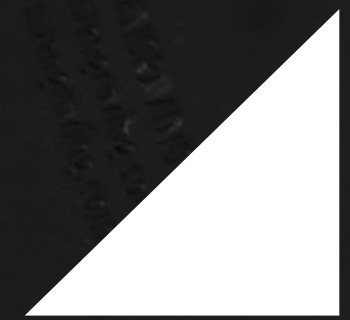
We provide you with our DRE Renders, that offer an immersive experience finished product on screen.

You will be able to confirm or ask for changes. DRE Renders send the information to the laser machine for the engraving.



[Click here to watch our DRE Render](#)





LOOKING FOR INSPIRATION?

Our Texture Collection is the answer: a selection of our ready-to-use textures that have already been industrialised; geometric finishes, pyramids, and 2D and 3D leather effects.

As well as anti-slip solutions for sports and safety. You can see and feel the final effect of the finish.

*Ask for your copy
of the Texture Collection.*

ML ENGRAVING VALUES

TEAMWORK



Our team is our most valued asset.
We have goals to achieve and we are all pulling together in the same direction.

TECHNOLOGICAL INNOVATION



Continuous innovation is the key to our success. R&D and challenging projects are at the basis of our problem-solving attitude.



SERVING OUR CUSTOMERS

We are at your service to ensure you a satisfactory experience and the complete management of your project.



TERRITORY AND COMMUNITY

Our mountains reflect the heights that we want to achieve in the market. But they also remind us to be grateful and respectful.



CONTACT US!

Foreign Market Manager

Ms. Chiara Benini

chiara.benini@mlengraving.com

+39 0346 72410 int. 2



[Follow me on LinkedIn](#)

ML ENGRAVING Srl

Via Presolana, 114

24020 Onore (BG)

Tel. +39 0346 72410

www.mlengraving.com



